

# Strengthen Your Speech-Language Pathologist Teletherapy Program

ASHA CEUs Available  
Live Online Seminar  
or Recorded Version



A Unique One-Day Live Online Seminar

## MariBeth Plankers, M.S., CCC-SLP, ATP

Outstanding Speech-Language Pathologist and National Presenter  
Specifically Designed for School-Based Speech-Language Pathologists  
Using Teletherapy with Students Grades K-12

---

Practical strategies to **increase the success of SLP teletherapy assessments** and intervention for all your students

---

**Innovative interventions that will engage and motivate** the participation of your students across the Big Nine areas of teletherapy

---

**Practical strategies that will “hook” students into participating** in your SLP teletherapy program with more enthusiasm

---

Optimize your therapy sessions and student relationships through **activities that connect your students as they learn using a teletherapy model**

---

**ASHA CEUs AVAILABLE**

### LIVE ONLINE SEMINAR

January 5

9 AM Eastern, 8 AM Central,  
7 AM Mountain, 6 AM Pacific

---

#### ASHA Credits Available

CEUs and Graduate Credit Available

See page 6 for details

#### CAN'T ATTEND?

Order the recorded version and take the seminar online at your convenience (see page 6)

# Ten Key Benefits of Attending

*'MariBeth is so wonderful! She has such great ideas, and gave excellent examples on how to apply them tomorrow! I feel so much better about my teletherapy practice, and even in-person therapy.'*

– AMY JACKSON,  
SPEECH-LANGUAGE  
PATHOLOGIST



## Who Should Attend

School-Based  
Speech-Language  
Pathologists Using  
Teletherapy with Students  
Grades K-12

- 1. Jumpstart and/or Update Your Online Teletherapy with All Students**  
Begin each of your sessions with evidence-based intervention plans that will captivate and engage your teletherapy
- 2. Unleash the Power of Questioning Designed for the Teletherapy Environment with All Your Students**  
Strengthen your virtual connection with students using techniques to increase the success of remote observations, assessment, and evaluation of performance across the Big Nine areas for the SLP
- 3. Virtual SLP Play-Based Therapy ... Is It Possible? YES!**  
Learn how to initiate and manage play-based therapy with your students in distance learning while addressing receptive and expressive language needed for communication
- 4. Simple Ways to Provide a Higher Quality Virtual Experience in Your SLP Program**  
Explore informal literacy assessments and interventions that teach skills for comprehension, narrative language, phonics, and phonemic awareness that can be easily adapted to teletherapy
- 5. Increase the Success of Diverse Speech and Language Learners in Your Virtual Setting**  
Invite your students into the virtual setting with specific and innovative activities that keep students wanting to learn more related to their communicative needs
- 6. Strengthen At-Home Generalization Learning**  
Distance learning provides an exceptional opportunity to model what the speech language pathologist targets in intervention along with demonstrating the generalization for communication of learning beyond therapy
- 7. Incorporate More Powerful Sensory Brain Breaks During Your Teletherapy Experience**  
Explore the use of sensory integration to empower learners to maintain engagement, participation, and successful outcomes throughout your teletherapy sessions
- 8. Encourage a Higher Level of Self-Regulation and Management to Increase Your Student's Online Learning Independence**  
Utilize the most effective practices to help your students move from a modeled on-screen lesson to more independent implementation in their own learning environment
- 9. Increase Authentic Parent Communication and Family Connections**  
Expand your repertoire of powerful daily interventions, tasks, and routines that unite the home and teletherapy room connection
- 10. Practical, Ready-to-Use Materials and Resources at Your Fingertips or Keyboard**  
Leave this seminar with your own comprehensive digital resource handbook filled with a multitude of strategies for your school and virtual desktop

# Outstanding Strategies You Can Use Immediately

## What You Will Learn ...

- Administration of formal and informal SLP assessment tools that will lead to **more functional and practical intervention**
- **Effective and efficient methods for assessing** receptive and expressive language, narrative and written language, voice, fluency, and particularly/phonological skills via teletherapy
- Determine measurability for voice, fluency, articulation, and pragmatic production via visual screen presentation **for the student to better understand** the outcomes and measures
- Applicable ways to **incorporate current goals and objectives** into your teletherapy
- How to **align your language therapy with literacy programs** your students use in the classroom and in online learning
- Current technology, **online web-based and application resources** that support communication skills and the development across a variety of disorders and communicative needs
- Ideas for incorporating multi-disciplinary instruction, Universal Design for Learning and Assistive Technology through **teletherapy**
- Generalization strategies to help teachers and paraprofessionals **better carryover the work you are doing in online therapy**
- **Various ideas for setting up collaborative treatment programs** that are motivating for virtual learners
- Ideas to **make your online therapy more motivating, engaging, and effective** for your students across all disorder areas
- Accessible supports from the Assistive Technology Professional to **support learners from no-tech to a level of high-tech**



*'There were so many resources presented both during the event and within the handbook. I can't wait to get started tomorrow with some of these great ideas.'*

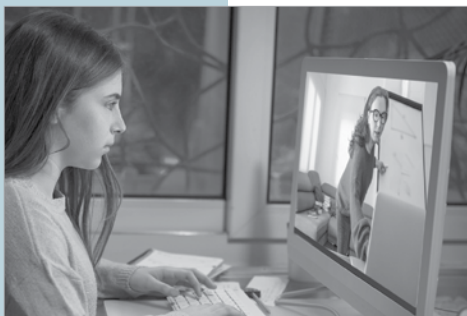
– LISA DION, SPEECH-LANGUAGE PATHOLOGIST

## Practical Ideas and Strategies

What do you need to do to make your SLP teletherapy more effective and efficient with your students? Receive a list of web-based interactive resources and applications to share with your students and families. In this seminar by outstanding Speech-Language Pathologist and Assistive Technology Professional **MariBeth Plankers**, learn the value of play-based therapy and the importance of communication intervention to gain insight into your students learning preferences, comprehension, and critical thinking skills as you assess for continued learning and understanding. Make every moment count with hands-on and electronic materials that your students can use during and after online sessions for practice and independent work with generalization of skills. Help your students become even more successful communicators through an engaging and motivating teletherapy environment.



# A Message From Seminar Leader, MariBeth Plankers



## Uniquely Qualified Instructor

**MARIBETH PLANKERS** is an outstanding national presenter and highly experienced Speech-Language Pathologist and Assistive Technology Professional. She brings years of experience and ideas for improving outcomes for students who have language, reading and written language disorders. She has extensive experience providing communication services within inclusive telehealth models. In addition, she has experience working as a consultant, clinical service provider, diagnostician, and clinical supervisor within the university setting. MariBeth reflects a broad experience working with students of all ages, from early education through college level. MariBeth is the author of *Strengthen Your Speech-Language Pathologist Teletherapy Program*, the digital resource handbook each participant will receive at this seminar. **Join MariBeth for a fast-paced, engaging seminar with practical, highly effective techniques you can use in your teletherapy program.**

Dear Colleague:

Welcome to the virtual communication therapy room! I have found in my practice that our students are up for the challenge of distance-learning. Think of where they are today, whether we are online, teaching them in their homes or transitioning from online learning to the speech therapy room. I continue to see happiness, smiles, laughter, and excitement for learning. My goal for this seminar is to provide you with the helpful tools you will need directly from what is working in my own distance learning assessments and interventions. I will model a variety of assessments and lessons so that your confidence will soar as you embrace the uniqueness of online therapy.

How can we help, guide, and communicate with those whom we value in the home setting: parents, grandparents, caregivers, agency staff members? I will provide you with intervention plans that will work for guided practice and independent life-time learning. You will be on your way to a quality online session each day. Please join me in this seminar to learn strategies, assessments, and interventions that you can truly use in your own teletherapy practice. Come ready to talk, sing, play, read, move, and share a day packed with engagement, motivators, and ready-to-use ideas for the SLP serving students in an online environment!

Sincerely,

MariBeth Plankers, M.S., CCC-SLP, ATP

**P.S.** I know how valuable your time is, so **my focus will be on sharing practical strategies** to make your SLP teletherapy more effective and efficient.

*"My goal for this seminar is to provide you with the helpful tools you will need directly from what is working in my own SLP teletherapy assessments and interventions."*

# What Your Colleagues Say About MariBeth Plankers

---

*"So many wonderful resources – I can't wait to explore and try all of MariBeth's suggestions!"*

Mara Jirelle, Speech-Language Pathologist

---

*"Very practical with **many take-aways that can be implemented immediately**. I really enjoyed this seminar!"*

Cathy White, Speech-Language Pathologist

---

*"This was a great seminar with tons of useful resources and explanation of how to use them. **I can't wait to try them with my students!**"*

Jaclyn Friese-Peterson, Speech-Language Pathologist

---

*"Loved how knowledgeable and excited MariBeth was about the topic. Very engaging and fun."*

Angela Cotherman, Speech-Language Pathologist

---



## About BER Seminars

### Outstanding Instructors

All programs are led by outstanding, top-rated BER national trainers.

### Extensive Digital Resource Handbook

You'll receive an extensive digital Resource Handbook full of practical strategies and resources.

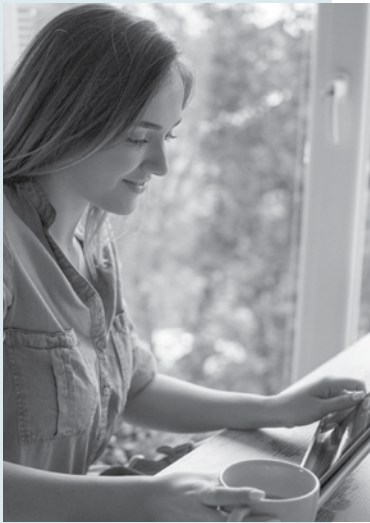
### Highly Interactive

You'll be able to ask questions, consult with the instructor, and share ideas with other participants.

### Program Guarantee

As we have for 45 years, we guarantee the high quality of our programs. If you are not satisfied, we'll give you a 100% refund.

# Special Benefits of Attending



"I learned about SO MANY great apps to try out with my students to up my online therapy game!"

LAURA FANELLA,  
SPEECH-LANGUAGE  
PATHOLOGIST

## On-Site Training


Most BER seminars can be brought to your school or district in-person or online. See the options at [www.ber.org/onsite](http://www.ber.org/onsite) or call 877-857-8964 to speak to one of our On-Site Training Consultants.

## Extensive Digital Resource Handbook

Each participant will receive an extensive digital resource handbook giving you access to countless strategies. The handbook includes:

- "Hear it today – use it tomorrow" assessments and interventions
- Distance learning tools for improving fluency, receptive and expressive language, literacy, augmentative alternative communications, written language, pragmatic, articulation, and voice
- A variety of specific therapy strategies to increase engagement and motivation for a variety of learners across ages
- Procedures to review, practice, and remind ... cues for making distance learning a quality experience
- Ready-to-use materials in an organized digital resource handbook with guidelines for sharing these resources in a distance learning environment

## ASHA CEUs Available



**ASHA CE  
APPROVED PROVIDER**

**Bureau of Education & Research**

Intermediate Level  
0.50 ASHA CEUs

ASHA CE Provider approval does not imply endorsement of course content, specific products, or clinical procedures.

ASHA-Required Disclosure Statement for MariBeth Plankers:

**Financial:** Presenter for the Bureau of Education & Research and receives honorarium compensation.

**Nonfinancial:** No relevant nonfinancial relationships exist.

**Have your ASHA Account Number available at the seminar if you will be completing forms for the ASHA CE Registry.**

## Meet Inservice Requirements / Earn State CEUs

Participants of Live Online Seminars and those completing the Recorded Version online can receive a certificate of participation that may be used to verify five continuing education hours. For details about state CEUs available, visit [www.ber.org/ceus](http://www.ber.org/ceus)

## Earn One to Four Graduate Semester Credits



University of  
Massachusetts  
Global A nonprofit  
affiliate

Up to four graduate level professional development credits are available with an additional fee and completion of follow up practicum activities. Details may be found at [www.ber.org/credit](http://www.ber.org/credit)

## Can't Attend?

### Other Professional Development Options:

#### Recorded Version of the Seminar

Order the recorded version of this seminar to take online at your convenience. You'll have access to the entire course and to the extensive digital resource handbook. To enroll, see registration form on page 7, and for optional CEUs and graduate credit, please visit [www.ber.org/credit](http://www.ber.org/credit)

#### Related On-Demand Online Courses

Related On Demand Video-Based Online Learning courses, *SLP: Promoting Rapid Change for Children with Severe Phonological Disorders*, for Grades PreK-6, *SLPs: Enhance Therapy Effectiveness for Auditory Processing Disorder, Memory Deficits, Attention Deficit Disorder, and Language Processing*, for Grades K-12, and other speech-language pathology courses, are available for immediate registration. To enroll, visit [www.ber.org/online](http://www.ber.org/online)

# Strengthen Your Speech-Language Pathologist Teletherapy Program

## Registration (XDP3W1)

- 1. January 5, 2023** (Start time: 9 AM Eastern)  
— or —
- 2. I'd like to order the recorded version of this seminar**

FIRST NAME M.I. LAST NAME

POSITION, SUBJECT TAUGHT GRADE LEVEL

SEMINAR LOCATION NUMBER: \_\_\_\_\_ (Please see list above)

*List additional registrants on a copy of this form*

SCHOOL NAME

SCHOOL MAILING ADDRESS

CITY & STATE ZIP CODE

SCHOOL PHONE NUMBER HOME PHONE NUMBER

( ) ( )

**Registration confirmations and login details are sent via e-mail**

E-MAIL ADDRESS (REQUIRED FOR EACH REGISTRANT)

HOME MAILING ADDRESS

CITY & STATE ZIP CODE

## IMPORTANT – PRIORITY ID CODE: EXDP3W1

### METHOD OF PAYMENT – Team Discount Available

The registration fee is \$279 per person, for teams of three or more registering at the same time, the fee is \$259 per person. **Payment is due prior to the program.** No cash, please.

- A check (payable to **Bureau of Education & Research**) is attached
- A purchase order is attached, P.O. # \_\_\_\_\_ (Be sure to include priority ID code on the P.O.)
- Charge my:  MasterCard  VISA  Discover
- Account # \_\_\_\_\_ Exp. Date: \_\_\_\_\_ MO/YR
- Billing Zip Code: \_\_\_\_\_ 3 Digit CVV Code: \_\_\_\_\_ (Found on back of card)
- \_\_\_\_\_  
Please print name as it appears on card Signature (required for credit card purchases)


## FIVE EASY WAYS TO REGISTER:

 REGISTER ONLINE at: [www.ber.org](http://www.ber.org)

 EMAIL this form to: [register@ber.org](mailto:register@ber.org)

 PHONE toll-free: **1-800-735-3503**  
(Weekdays 5:30 am - 5:00 pm Pacific Time)

 FAX this form to: **1-425-453-1134**

 MAIL this form to: **Bureau of Education & Research**  
915 118th Avenue SE • PO Box 96068  
Bellevue, WA 98009-9668

## Program Hours

All **Live Online** Seminars are scheduled 9:00 a.m. – 3:30 p.m. in the time zone indicated. Check in 15 minutes prior. Registrants will be sent login information by email four days before their Live Online Seminar.

## Fee

The registration fee is \$279 per person, \$259 per person for groups of three or more registering at the same time. Call us at 1-800-735-3503 for groups of ten or more. **Payment is due prior to the program.**

Fee includes seminar registration, a certificate of participation and an extensive digital resource handbook. The fee is the same for Live Online Seminars or Recorded Seminars.

## Cancellation/Substitutions

100% of your paid registration fee will be refunded if you can't attend and notify us at least 10 days before the seminar. Late cancellations made prior to the event date will be refunded less a \$15 service fee. Substitutions may be made at any time without charge.

## Program Guarantee

We stand behind the high quality of our programs by providing the following unconditional guarantee: If you are not satisfied with this program, we'll give you a 100% refund of your registration fee.

## Further Questions

Call the Bureau of Education & Research (800) 735-3503 or visit us online at [www.ber.org](http://www.ber.org). The Bureau is North America's leading presenter of PD training for professional educators. Programs are based on sound research, are highly practical in content and consistently receive excellent evaluations.



XDP3W1

© 2022 Bureau of Education & Research. All rights reserved.

# Strengthen Your Speech-Language Pathologist Teletherapy Program



An outstanding one-day Live Online Seminar

Includes an extensive digital Resource Handbook

Can't Attend Live? Order the Recorded Version to  
access online at your convenience



BUREAU OF EDUCATION & RESEARCH

915 118th Avenue SE  
PO Box 96068  
Bellevue, WA 98009-9668  
[www.ber.org](http://www.ber.org)

Prsrt Std  
U.S. Postage  
**PAID**  
Bureau of  
Education &  
Research

## Speech-Language Pathologists: Strengthening Teletherapy

XDP3W1

## Strengthen Your Speech-Language Pathologist Teletherapy Program



Bureau of Education & Research

ASHA  
CEU's Available  
Live Online Seminar  
or Recorded Version



**A Unique One-Day Live Online Seminar**  
(Also available as a Recorded Online Version  
to Use at Your Convenience)

Presented by

**Maribeth Plankers, M.S., CCC-SLP, ATP**  
Outstanding Speech-Language Pathologist  
and National Presenter

Practical strategies to **increase the success of SLP teletherapy assessments** and intervention for all your students

**Innovative interventions that will engage and motivate** the participation of your students across the Big Nine areas of teletherapy

**Practical strategies that will "hook" students into participating** in your SLP teletherapy program with more enthusiasm

Optimize your therapy sessions and student relationships through **activities that connect your students as they learn using a teletherapy model**