

School-Based Speech-Language Pathologists: Powerful Strategies for Reducing Challenging Behaviors to Increase Student Success



A Unique One-Day Live Online Seminar

Mary B. Asper

Outstanding Speech-Language Pathologist and National
Presenter

Specifically Designed for School-Based Speech-Language
Pathologists Serving Students in Grades PreK-12

Highly effective strategies for school-based SLPs to reduce challenging behaviors while increasing students' success

Gain valuable tools to use with your most challenging students, and spend less time addressing difficult behaviors

Powerful, current strategies to increase students' regulation, co-regulation, and emotional safety

Receive an extensive digital resource handbook filled with practical techniques, ideas and powerful strategies for reducing challenging behaviors and increasing student success

ASHA CEUs AVAILABLE AT ALL LOCATIONS

LIVE ONLINE SEMINARS

January 24

9 AM Central, 8 AM Mountain,
7 AM Pacific, 10 AM Eastern

February 2

9 AM Eastern, 8 AM Central,
7 AM Mountain, 6 AM Pacific

**ASHA Credits Available at all
Locations**

CEUs and Graduate Credit Available
See page 6 for details

CAN'T ATTEND?

Order the recorded version
and take the seminar online at
your convenience (see page 6)

*"This is the best seminar
I have been to in
years. I can use these
techniques tomorrow.
Great job, Mary!"*

Ten Key Benefits of Attending

"I loved all the practical ideas and strategies that can be easily implemented into therapy."



Who Should Attend

School-Based
Speech-Language
Pathologists Serving
Students in Grades PreK-12

1. **Powerful Strategies for Reducing Challenging Behaviors to Increase Student Success**

Gain the essential tools, resources, and strategies you need to make a marked difference in the lives of the students you serve

2. **Increase Students' Ability to Be Flexible, Adapt, Tolerate Frustration, and Solve Problems**

Discover proven strategies to identify and assess areas in which your students need your support ... Receive highly effective tools to help inform intervention plans

3. **Implement the Five Essentials Students Need to Succeed**

Every student has five essential needs for comfort, structure, communication and more within the therapy room and classroom ... Learn practical ways to integrate these five key essentials to increase students' academic and social success

4. **Equip Students with Valuable Self-Regulation Strategies**

Learn how to help students identify when they are becoming dysregulated ... Teach them to apply calming strategies to achieve balance and regulation

5. **Better Identify the Signs and Symptoms of Escalation and Dysregulation**

Become more familiar with the first signs of students' approaching loss of internal control ... Acquire the necessary skills to "get ahead" of the behavior before it becomes overwhelming

6. **Gain Valuable Tools to Use with Your Most Challenging Students**

Develop a plan that includes responsive strategies to keep students engaged, focused, and maintaining their learning momentum ... Practice the positive, effective skill of responding instead of reacting

7. **Design Effective Intervention Plans for Students with Difficulty Self-Regulating**

Gain innovative, powerful strategies for gathering pertinent information and creating more effective intervention plans for students who are often dysregulated ... Support your students in learning, applying, and succeeding

8. **Engage and Motivate Even Your Most Resistant Students**

Use current, child-centered philosophies, strategies, and perspectives to establish stronger relationships with all your students ... Learn practical ways to keep your sessions strength-based and solution-oriented

9. **Essential Self-Care Practices for SLPs Working with Challenging Students**

Explore a variety of important self-care practices to remain at your best and avoid burnout ... Ways to restore and refresh your energy so you can continue to best support your students

10. **Receive an Extensive Challenging Behaviors Digital Resource Handbook**

You will receive an extensive digital resource handbook, specifically designed for this seminar, and packed with practical techniques, ideas, and powerful strategies you can use immediately to reduce challenging behaviors and increase student success

Outstanding Strategies You Can Use Immediately

What You Will Learn ...

- **Highly effective, classroom-proven strategies** for reducing challenging behaviors to increase student success
- **Dozens of practical intervention techniques** to help students with challenges including social-emotional dysregulation, adverse childhood experiences, divergent learning styles, severely delayed communication development, and more!
- **Practical ways to equip students** with valuable self-regulation strategies
- **Early warning signs and symptoms** of escalation and dysregulation – ways to identify and “get ahead” of the behavior and achieve regulation sooner
- **Innovative activities to calm the brain**, unlock creativity, and accelerate availability for learning
- **Ways to identify underlying “triggers”** for challenging behaviors and apply upstream interventions
- **Essential strategies** for creating greater emotional safety for students with challenging behaviors
- **Foundational cognitive skills** for strengthening flexible thinking **as well as the ability to adapt, tolerate frustration, and solve problems**
- **Psychoeducational strategies** you can use with your students to help them better understand their brain and how it works
- **Neurological implications for our work** as SLPs, helping improve students self-regulation, co-regulation, and communication
- **Vital self-care practices for SLPs** to avoid exhaustion and burnout, and continue to best support their students



“What a fabulous, useful workshop! I was hoping to come away with a handful of new ideas for therapy but instead got so much more!”

Practical Ideas and Strategies

Dr. Ross Greene writes that, “Children do well if they can.” Often, students’ behaviors are viewed as something under their control – a bad habit that the child could stop if only they wanted to. As SLPs, we know words have power and the way something is described often focuses our own emotional lens in a specific way. In this powerful seminar, learn to focus your lens more on what students can do well, and how to teach and scaffold the primary cognitive skills needed for student success. Gain a better understanding of the sensory, biological, neurological, and communicative factors that underlie many challenging student behaviors. You’ll leave feeling confident with powerful tools and techniques not only for resolving challenging behaviors, but also helping prevent them from happening. **MARY B. ASPER**, an exceptional speech-language pathologist and national presenter, will share classroom-proven ideas, techniques, and strategies she has successfully used with her own students. This outstanding seminar is designed to offer SLPs for grades PreK-12 numerous tools and techniques for changing students’ undesirable behaviors into positive, productive learning behaviors



A Message From Seminar Leader, Mary B. Asper

Uniquely Qualified Instructor

MARY B. ASPER has focused her school-based SLP practice on individualized therapeutic interventions for neurologically diverse children, including autistic students and children with emotional-behavioral challenges, adverse childhood experiences (trauma), and students experiencing significantly delayed communication development. As a consultant, she has developed tools for program assessment, individualized curricula, paraeducator and educator collaboration, and team training that have proven successful in public school settings as well as in independent alternative and private schools. Her areas of specialty include Social Cognition, Social Communication, Alternative/Augmentative Communication, Assistive Technology, and Executive Function. Mary has served on the board of her state's Speech-Language Hearing Association. She is a recipient of ASHA's ACE award for continuing education and is an Autism Spectrum Disorder Clinical Specialist. Mary is also the author of, *School-Based Speech-Language Pathologists: Powerful Strategies for Reducing Challenging Behaviors to Increase Student Success*, the extensive resource handbook you will receive at her seminar. **Join Mary for an interactive, engaging, and fun day filled with highly effective, practical ideas and strategies you can use immediately to reduce challenging behaviors and increase student success.**

Dear Colleague:

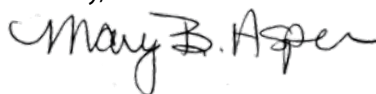
By choice or by chance, I have invested many years working with some of the most challenging, undesirable behaviors in schools, residential child treatment centers and alternative educational programs. When I was a newly graduated SLP, I was assigned to a second-grade student who could clear the cafeteria in 30 seconds flat (including throwing her tray at the food service ladies) and who destroyed classroom projects with impunity. I soon discovered that the techniques I had learned in graduate school, and in life, were not successful with highly dysregulated, traumatized, and unhappy students. I had a need to discover strategies and interventions that would help students maintain a balanced, calm state of mind and communicate with their words and thoughts rather than their actions.

Over the years, I learned to support behavioral regulation in students from preschool to graduation and everything in between. Whether in the therapy room, the classroom, or across the entire school, I have found that SLPs are often the professionals that teachers and staff turn to for assistance with dysregulated students.

Let me share with you what I have learned, so that you can also experience the rewards of powerful intervention strategies to reduce students' challenging behaviors and increase your effectiveness as a therapeutic professional. During our day together, I will present you with dozens of strategies, ideas, and activities you can use to teach students how to identify when they are becoming dysregulated, and to establish a routine of calm, regulated behavior. Explore specific ways to strengthen areas of the brain that help increase students' flexibility, adaptability, frustration tolerance, and creativity in solving their own problems. Examine triggers for challenging behaviors and design plans to reduce environmental stressors, task demands, and sensory overload. For you, the SLP, we'll explore self-care techniques that will restore and refresh your energy and prepare you to face another day with hope and joy.

My goal for this seminar is to outfit you with tools, strategies, ideas, and knowledge that you can put into practice immediately, and to give you a fresh perspective on how to reduce your students' challenging behaviors to achieve learning success.

Sincerely,



Mary B. Asper

P.S. Be prepared to leave with **dozens of practical solutions** for developing self-regulation skills that will help all your students respond in more calm and communicative ways in the therapy room, classroom, and whole-school setting.

"Let me share with you what I have learned, so that you can also experience the rewards of powerful intervention strategies to reduce students' challenging behaviors and increase your effectiveness as a therapeutic professional."

What Your Colleagues Say About Mary B. Asper

***"Great ideas and very practical!** I loved Mary's energy and her examples, which made the content relatable."*

*"I enjoyed today. Thanks for the **wonderful handbook and materials.**"*

*"Mary was **great about answering questions from the audience.** Thanks!"*

*"The examples from challenging students Mary has worked with were **very beneficial to my learning.**"*

*"I really **learned a lot today** and I look forward to making an even greater difference with my students."*

*"This seminar provided **many practical and useful approaches** for helping students with challenging behaviors."*

*"I'm excited to walk away with a resource handbook **loaded with highly applicable activities** to use with my students of all ages."*



About BER Seminars

Outstanding Instructors

All programs are led by outstanding, top-rated BER national trainers.

Extensive Digital Resource Handbook

You'll receive an extensive digital Resource Handbook full of practical strategies and resources.

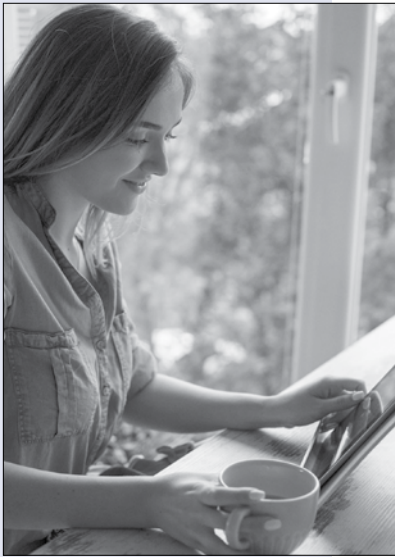
Highly Interactive

You'll be able to ask questions, consult with the instructor, and share ideas with other participants.

Program Guarantee

As we have for 45 years, we guarantee the high quality of our programs. If you are not satisfied, we'll give you a 100% refund.

Special Benefits of Attending



"Dynamic and packed full of resources that I can implement immediately. Loved it!"

On-Site Training


Most BER seminars can be brought to your school or district in-person or online. See the options at www.ber.org/onsite or call 877-857-8964 to speak to one of our On-Site Training Consultants.

Extensive Challenging Behaviors Digital Resource Handbook

You will receive an extensive digital resource handbook giving you access to countless strategies. The handbook includes:

- Extensive resources and strategies to assist you in reducing challenging behaviors while increasing student success
- Ready-to-use interventions and activities to increase self-regulation, classroom or therapy room participation, and social engagement
- Visual strategies to strengthen students' motivation, calmness, engagement, and reflection
- Resources to identify underlying causes of challenging behaviors and help you develop powerful, effective intervention plans
- Plans and tools that help make transitions smooth and simple

ASHA CEUs Available

	ASHA CE APPROVED PROVIDER	Bureau of Education & Research Intermediate Level 0.50 ASHA CEUs
ASHA CE Provider approval does not imply endorsement of course content, specific products, or clinical procedures.		

ASHA-Required Disclosure Statement for Mary B. Asper:

Financial: Presenter for the Bureau of Education & Research and receives honorarium compensation.

Nonfinancial: No relevant nonfinancial relationships exist.

Have your ASHA Account Number available at the seminar if you will be completing forms for the ASHA CE Registry.

Meet Inservice Requirements / Earn State CEUs

Participants of Live Online Seminars, and those completing the Recorded Version online can receive a certificate of participation that may be used to verify five continuing education hours. For details about state CEUs available, visit www.ber.org/ceus

Earn One to Four Graduate Semester Credits



University of
Massachusetts
Global A nonprofit
affiliate

Up to four graduate level professional development credits are available with an additional fee and completion of follow up practicum activities. Details may be found at www.ber.org/credit

Can't Attend?

Other Professional Development Options:



Recorded Version of the Seminar

Order the recorded version of this seminar to take online at your convenience. You'll have access to the entire course and to the extensive digital resource handbook. To enroll, see registration form on page 7, and for optional CEUs and graduate credit, please visit www.ber.org/credit



Related On-Demand Online Courses

A related On Demand Video-Based Online Learning course, *SLP: Promoting Rapid Change for Children with Severe Phonological Disorders*, for Grades PreK-6, *SLPs: Enhance Therapy Effectiveness for Auditory Processing Disorder, Memory Deficits, Attention Deficit Disorder, and Language Processing*, for Grades K-12, and other related courses are available for immediate registration. To enroll, visit www.ber.org/online

School-Based Speech-Language Pathologists: Powerful Strategies for Reducing Challenging Behaviors to Increase Student Success

Registration (XDA3W1)

1. **January 24, 2023** (Start time: 9 AM Central)
2. **February 2, 2023** (Start time: 9 AM Eastern)
- or —
3. **I'd like to order the recorded version of this seminar**

FIRST NAME	M.I.	LAST NAME
<hr/>		
POSITION, SUBJECT TAUGHT	GRADE LEVEL	
<hr/>		
SEMINAR NUMBER: _____ (Please see list above)		

List additional registrants on a copy of this form

SCHOOL NAME	
<hr/>	
SCHOOL MAILING ADDRESS	
<hr/>	
CITY & STATE	ZIP CODE
<hr/>	<hr/>
SCHOOL PHONE NUMBER	HOME PHONE NUMBER
()	()

Registration confirmations and login details are sent via e-mail

E-MAIL ADDRESS (REQUIRED FOR EACH REGISTRANT)	
<hr/>	
HOME MAILING ADDRESS	
<hr/>	
CITY & STATE	ZIP CODE
<hr/>	<hr/>

IMPORTANT – PRIORITY ID CODE: EXDA3W1

METHOD OF PAYMENT – Team Discount Available

The registration fee is \$279 per person, for teams of three or more registering at the same time, the fee is \$259 per person. **Payment is due prior to the program.** No cash, please.

- A check (payable to **Bureau of Education & Research**) is attached
- A purchase order is attached, P.O. # _____
(Be sure to include priority ID code on the P.O.)
- Charge my: MasterCard VISA Discover
- Account # _____ Exp. Date: _____
MO/YR
- Billing Zip Code: _____ 3 Digit CVV Code: _____
(Found on back of card)

Please print name as it appears on card

FIVE EASY WAYS TO REGISTER:

-  **REGISTER ONLINE** at: www.ber.org
-  **EMAIL this form to:** register@ber.org
-  **PHONE toll-free:** **1-800-735-3503**
(Weekdays 5:30 am - 5:00 pm Pacific Time)
-  **FAX this form to:** **1-425-453-1134**
-  **MAIL this form to:** **Bureau of Education & Research**
915 118th Avenue SE • PO Box 96068
Bellevue, WA 98009-9668

Program Hours

All Live Online Seminars are scheduled 9:00 a.m. – 3:30 p.m. in the time zone indicated. Check in 15 minutes prior. Registrants will be sent login information by email four days before their Live Online Seminar.

Fee

The registration fee is \$279 per person, \$259 per person for groups of three or more registering at the same time. Call us at 1-800-735-3503 for groups of ten or more. **Payment is due prior to the program.**

Fee includes seminar registration, a certificate of participation and an extensive digital resource handbook. The fee is the same for Live Online Seminars or Recorded Seminars.

Cancellation/Substitutions

100% of your paid registration fee will be refunded if you can't attend and notify us at least 10 days before the seminar. Late cancellations made prior to the event date will be refunded less a \$15 service fee. Substitutions may be made at any time without charge.

Program Guarantee

We stand behind the high quality of our programs by providing the following unconditional guarantee: If you are not satisfied with this program, we'll give you a 100% refund of your registration fee.

Further Questions

Call the Bureau of Education & Research (800) 735-3503 or visit us online at www.ber.org. The Bureau is North America's leading presenter of PD training for professional educators. Programs are based on sound research, are highly practical in content and consistently receive excellent evaluations.



XDA3W1

© 2022 Bureau of Education & Research. All rights reserved.

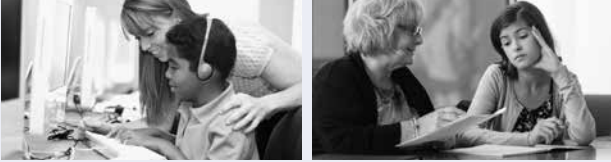
Prsrt Std
U.S. Postage
PAID
Bureau of
Education &
Research



BUREAU OF EDUCATION & RESEARCH

915 118th Avenue SE
PO Box 96068
Bellevue, WA 98009-9668
www.ber.org

School-Based Speech-Language Pathologists: Powerful Strategies for Reducing Challenging Behaviors to Increase Student Success



Speech-Language Pathologists: REDUCE CHALLENGING BEHAVIORS ASHA CEUs Available

An outstanding one-day Live Online Seminar

Includes an extensive digital Resource Handbook

Can't Attend Live? Order the Recorded Version to
access online at your convenience

XDA3W1



School-Based Speech-Language Pathologists: Powerful Strategies for Reducing Challenging Behaviors to Increase Student Success

ASHA
CEUs Available
Live Online Seminar or
Recorded Version



A Unique One-Day Live Online Seminar
(Or Order the Recorded Online Version to Access at Your Convenience)

Presented by

Mary B. Asper

Outstanding Speech-Language Pathologist and National
Presenter

Highly effective strategies for school-based SLPs to reduce challenging behaviors while increasing students' success

Gain valuable tools to use with your most challenging students, and spend less time addressing difficult behaviors

Powerful, current strategies to increase students' regulation, co-regulation, and emotional safety

Receive an extensive digital resource handbook filled with practical techniques, ideas and powerful strategies for reducing challenging behaviors and increasing student success