

# **PURPOSEFUL PLAY**

## **to Increase Students' Academic Learning and Social-Emotional Growth**

### **(Preschool - Kindergarten)**



A Unique One-Day Live Online Seminar  
Presented by

**Sheri Sutterley**

Outstanding Teacher, Author and National Presenter

**Specifically Designed for Educators Working with Preschool and Kindergarten Children: Preschool, PreK and Kindergarten Teachers, Head Start Teachers, Instructional Assistants, Special Education Staff, and Administrators**

**The best, most-current classroom-proven strategies** to increase students' learning and social-emotional growth with purposeful play

**Dozens of practical, timesaving ideas** for making best use of play-based learning to enhance your preschool or kindergarten instruction

**Outstanding ways** to foster a growth mindset and to develop students' foundational skills, creativity, perseverance, and confidence as learners

**Receive an extensive digital purposeful play resource handbook** filled with strategies, tips and activities designed specifically to support your young learners

#### **LIVE ONLINE SEMINARS**

**October 27**

**9 AM Eastern**, 8 AM Central,  
7 AM Mountain, 6 AM Pacific

**November 2**

**9 AM Central**, 8 AM Mountain,  
7 AM Pacific, 10 AM Eastern

CEUs and Graduate Credit Available  
See page 6 for details

#### **CAN'T ATTEND?**

Order the recorded version  
and take the seminar online at  
your convenience (see page 6)

# Ten Key Benefits of Attending

*"Great seminar to get the creative juices flowing again and doing what we do best - teaching kids through hands on play activities!"*

– KIM KEENEY,  
INCLUSION TEACHER



## Who Should Attend

Educators Working with Preschool and Kindergarten Children:  
Preschool, PreK and Kindergarten Teachers,  
Head Start Teachers,  
Instructional Assistants,  
Special Education Staff,  
and Administrators

### 1. Increase Learning and Social-Emotional Growth

Researchers and educators increasingly recognize the vital role of purposeful play in strengthening academic and social-emotional skills ... Learn outstanding ways to make best use of purposeful play in your preschool or kindergarten classroom

### 2. Explore Play as a Foundation for Early Literacy

Facilitate the development of language, vocabulary, storytelling, and early literacy skills ... Incorporate dozens of innovative ideas including literature, puppets, sensory tubs, early learning games, music and much more!

### 3. Develop Your Students' Communication Skills Through Play

Foster language development, listening skills, social interaction, and conversation ... Help students build social-interaction, conflict-resolution and decision-making skills

### 4. Enhance Creativity and Build Students' Confidence

Foster curiosity and belief that students can "do it!" through play-based learning ... Help students get an early start on becoming creative, independent learners with the confidence to take risks

### 5. Design the Ideal Early Learning Purposeful Play Classroom

Explore numerous ideas for incorporating play into your classroom environment ... Reimagine your classroom using the space and materials you already have available to facilitate powerful guided and non-structured play-based learning

### 6. Incorporate Hands-On Purposeful Play Activities

Integrate meaningful and purposeful play activities designed to build literacy, fine motor and readiness skills ... Enhance student learning and understanding of key academic concepts through hands-on play-based activities and practices

### 7. Develop Readiness and Early Writing Skills

Discover developmentally appropriate readiness ideas perfect for your young writers in the classroom setting ... Learn how to incorporate play-based drawing and writing activities that establish a purpose and audience for writing

### 8. Powerfully Connect Play with Math and Science / STEAM Explorations

Help students explore key concepts through purposeful play and guided inquiry ... Capitalize on your students' natural curiosity and interest in exploring the world, and enrich their thinking with Depth of Knowledge strategies

### 9. Foster a Growth Mindset with Your Preschool and Kindergarten Students

Encourage students to be risk-taking learners who persevere beyond their successes and challenges ... Gain strategies to foster effort, hard work and practice to help students achieve their potential and feel in control over their own success within the classroom

### 10. Receive an Extensive Digital Purposeful Play Resource Handbook

You will receive an extensive digital resource handbook, specifically designed for this seminar and filled with practical ideas and strategies to increase students' academic learning and social-emotional growth with purposeful play

# Outstanding Strategies You Can Use Immediately

## What You Will Learn ...

- **Practical strategies for making best use of purposeful play** to increase students' academic learning and social-emotional growth
- **Creative play-based ways to strengthen** critical thinking, questioning and academic vocabulary in your early learners
- **Outstanding examples and ways** to connect purposeful play with your existing instruction and learning goals, including math, science and STEAM explorations while in the classroom
- **Effective strategies to foster growth mindset** and help your students be courageous learners
- **Proven ways to create a developmentally appropriate**, child-centered learning environment for preschool and kindergarten students
- **Readiness activities** including drawing and writing to establish a purpose and audience for writing through play-based learning activities
- **Doable purposeful play approaches to easily differentiate** your reading, writing, listening, and math instruction
- **A wealth of low-cost materials** and ready-to-use tools for enhancing play in your classroom ... Watch as your classroom comes alive!
- **Ways to strengthen** students' social-interaction, conflict-resolution and decision-making skills
- **Practical, classroom-proven scheduling tips** for integrating play into your existing instruction and program



*"I loved learning so many ways to guide kids to learn and play."*

– KATHY GRENIER, PARAPROFESSIONAL

## Practical Ideas and Strategies

Unfortunately, in the attempt to maximize academic gains in many schools, play in early education was pushed out or greatly reduced. However, research increasingly recognizes that a balance that includes purposeful play is vital for developing strong academic and social-emotional skills in young learners.

In this innovative and engaging seminar by **SHERI SUTTERLEY** you will learn proven strategies to make best use of purposeful play in your preschool or kindergarten classroom. Explore play as a foundation of readiness skills for literacy, a method to integrate STEAM through focused questioning and exploring, and an opportunity to build vital language and social skills. The focus will be on practical, age-appropriate strategies, materials and creative opportunities you can easily incorporate in your preschool or kindergarten program. **Join Sheri for this idea-packed seminar, filled with numerous practical strategies and ideas for increasing students' academic and social-emotional growth through purposeful play.**



# A Message From Seminar Leader, Sheri Sutterley



## Uniquely Qualified Instructor

**SHERI SUTTERLEY** is an exceptional kindergarten and preschool teacher. She regularly presents at early childhood conferences and has served as a mentor and master teacher throughout her extensive career. Sheri is particularly passionate about incorporating purposeful play without sacrificing high quality and effective instruction for preschool and kindergarten students. Sheri's seminars are filled with practical, classroom-tested, developmentally appropriate ideas for enhancing instruction and increasing the success of preschool and kindergarten students. She is also the author of *PURPOSEFUL PLAY to Increase Students' Academic Learning and Social-Emotional Growth*, the extensive digital resource handbook you will receive at the seminar. Sheri's love of teaching our youngest students is captivating and she enjoys equipping fellow teachers with powerful, current ideas and strategies designed to enhance student learning. **Join Sheri for an inspiring, engaging, creative, and fun day full of practical ways to help you increase students' learning and social-emotional growth through purposeful play.**

Dear Colleague:

Thank you for your commitment, enthusiasm, and joyful energy for teaching our youngest students. As Preschool, Pre-K and Kindergarten teachers, we are in a demanding and "pressure-filled" environment every day. Over my years of teaching, I have seen the academic expectations of our students change dramatically. We are the first teachers to emphasize educational standards that will follow our learners throughout their years of formal education. Keeping our focus on our students while developing meaningful learning experiences is not an easy challenge for us.

I have designed this seminar specifically to help you make best use of purposeful play in your own preschool or kindergarten classroom. Our day will be devoted to exploring outstanding ways you can integrate purposeful play within your existing curricula and instruction with your young learners. I want to equip you with the best, most current ideas and resources for increasing students' academic learning and social-emotional growth with purposeful play.

I am excited to share with you a wealth of highly practical ideas, activities and strategies that I have successfully used with my own students. I promise, everything I share is classroom-proven, meaningful and easy to use within your current program. Join me and experience the same joy of learning that your students will feel when they use their play-based thinking to solve problems and satisfy their own curiosity. I personally look forward to meeting you at the seminar as we share our dedication and passion of teaching our youngest children!

Sincerely,

*Sheri Sutterley*

Sheri Sutterley

P.S. I promise to make this day fast-paced, idea-packed and fun-filled with **practical and interactive ideas you can easily use right away.** Let's play!

*"I am excited to share with you a wealth of highly practical ideas, activities and strategies that I have successfully used with my own students."*

# What Your Colleagues Say About Sheri Sutterley

*"I appreciate how interactive Sheri made the seminar and that it was **filled with practical ideas.**"*

– Emily Howell, Special Education Teacher

*"**Very motivational!** I'm leaving the seminar feeling like I want to get into my classroom and begin the transition to more purposeful play ASAP!"*

– Stephanie Hartung, Kindergarten Teacher

*"Sheri kept it **very engaging** throughout the entire day. She was so generous with the activities she provided us both in handout and also a Google Drive folder!"*

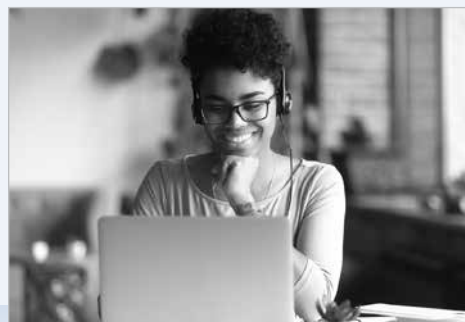
– Molly Heyn, Kindergarten Teacher

*"I am walking away with **so many ideas to use in my classroom!** I loved the music, book suggestions, games, and activities! Thank you!"*

– Mary Terriberry, PreK Teacher

*"**I LOVED this PD!** This is the first PD we have found that is actually geared toward our young learners and it was super beneficial! I can't wait to try these play ideas in our everyday learning!"*

– Jamie Scoles, Kindergarten Teacher



## About BER Seminars

### Outstanding Instructors

All programs are led by outstanding, top-rated BER national trainers

### Extensive Digital Resource Handbook

You'll receive an extensive digital Resource Handbook full of practical strategies and resources.

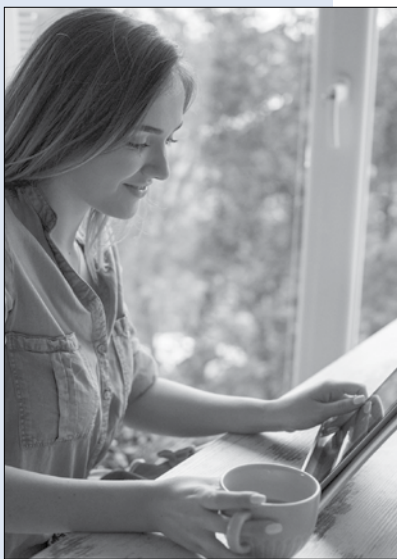
### Highly Interactive

You'll be able to ask questions, consult with the instructor, and share ideas with other participants

### Program Guarantee

As we have for 45 years, we guarantee the high quality of our programs. If you are not satisfied, we'll give you a 100% refund.

# Special Benefits of Attending



*"What a great seminar! I learned lots of hands-on activities I can use with my students."*

ANGELA LOHMANN,  
KINDERGARTEN TEACHER

## On-Site Training

Most BER seminars can be brought to your school or district in-person or online. See the options at [www.ber.org/onsite](http://www.ber.org/onsite) or call 877-857-8964 to speak to one of our On-Site Training Consultants.

## Extensive Purposeful Play Digital Resource Handbook

You will receive an extensive digital resource handbook specifically designed for this seminar. The handbook includes:

- Timesaving, practical strategies for making best use of play-based learning in your existing preschool or kindergarten program
- Highly effective ways to enhance your instruction with purposeful play
- Dozens of purposeful play ideas including literature, puppets, sensory tubs, early learning games, and much more!
- Tips and tricks every preschool and kindergarten educator should have for saving time, avoiding headaches and setting the stage for success

## Share Ideas

This seminar provides a wonderful opportunity for participants to share ideas with other early childhood educators interested in making best use of purposeful play to increase students' learning and social-emotional growth.

## Consultation Available

Sheri Sutterley will be available at the seminar for consultation regarding your questions and the unique needs of your own preschool or kindergarten program.

## Meet Inservice Requirements / Earn State CEUs

Participants of Live Online Seminars, and those completing the Recorded Version online can receive a certificate of participation that may be used to verify five continuing education hours. For details about state CEUs available, visit [www.ber.org/ceus](http://www.ber.org/ceus)

## Earn One to Four Graduate Semester Credits



Up to four graduate level professional development credits are available with an additional fee and completion of follow up practicum activities. Details may be found at [www.ber.org/credit](http://www.ber.org/credit)

## Can't Attend?

### Other Professional Development Options:



#### Recorded Version of the Seminar

Order the recorded version of this seminar to take online at your convenience. You'll have access to the entire course and to the extensive digital resource handbook. To enroll, see the registration form on page 7, and for optional CEUs and graduate credit available, please visit [www.ber.org/credit](http://www.ber.org/credit)



#### Related On-Demand Online Courses

A related On Demand Video-Based Online Learning course, *Increase All Your Students' Learning with Practical, Timesaving Work Stations*, for Grades PK-K, is available for immediate registration. To enroll, visit [www.ber.org/online](http://www.ber.org/online)

# PURPOSEFUL PLAY to Increase Students' Academic Learning and Social-Emotional Growth (Preschool - Kindergarten)

## Registration (QPS3F1)

- ☐ 1. **October 27, 2022** (Start time: 9 AM Eastern)
- ☐ 2. **November 2 2022** (Start time: 9 AM Central)
- or —
- ☐ 3. **I'd like to order the recorded version of this seminar**

FIRST NAME M.I. LAST NAME

POSITION, SUBJECT TAUGHT GRADE LEVEL

SEMINAR NUMBER: \_\_\_\_\_ (Please see list above)

### List additional registrants on a copy of this form

SCHOOL NAME

SCHOOL MAILING ADDRESS

CITY & STATE ZIP CODE

SCHOOL PHONE NUMBER HOME PHONE NUMBER

( ) ( )

### Registration confirmations and login details are sent via e-mail

E-MAIL ADDRESS (REQUIRED FOR EACH REGISTRANT)

HOME MAILING ADDRESS

CITY & STATE ZIP CODE

## IMPORTANT – PRIORITY ID CODE: EQPS3F1

### METHOD OF PAYMENT – Team Discount Available

The registration fee is \$279 per person, for teams of three or more registering at the same time, the fee is \$259 per person. **Payment is due prior to the program.** No cash, please.

- ☐ A check (payable to **Bureau of Education & Research**) is attached
- ☐ A purchase order is attached, P.O. # \_\_\_\_\_ (Be sure to include priority ID code on the P.O.)
- ☐ Charge my: ☐ MasterCard ☐ VISA ☐ Discover

Account # \_\_\_\_\_ Exp. Date: \_\_\_\_\_ MO/YR

Billing Zip Code: \_\_\_\_\_ 3 Digit CVV Code: \_\_\_\_\_ (Found on back of card)

Please print name as it appears on card


### FIVE EASY WAYS TO REGISTER:

 **REGISTER ONLINE at: [www.ber.org](http://www.ber.org)**

 **EMAIL this form to: [register@ber.org](mailto:register@ber.org)**

 **PHONE toll-free: 1-800-735-3503**  
(Weekdays 5:30 am - 5:00 pm Pacific Time)

 **FAX this form to: 1-425-453-1134**

 **MAIL this form to: Bureau of Education & Research**  
915 118th Avenue SE • PO Box 96068  
Bellevue, WA 98009-9668

### Program Hours

All Live Online Seminars are scheduled 9:00 a.m. – 3:30 p.m. in the time zone indicated. Check in 15 minutes prior. Registrants will be sent login information by email four days before their Live Online Seminar.

### Fee

The registration fee is \$279 per person, \$259 per person for groups of three or more registering at the same time. Call us at 1-800-735-3503 for groups of ten or more. **Payment is due prior to the program.**

Fee includes seminar registration, a certificate of participation and an extensive digital resource handbook. The fee is the same for Live Online Seminars or Recorded Seminars.

### Cancellation/Substitutions

100% of your paid registration fee will be refunded if you can't attend and notify us at least 10 days before the seminar. Late cancellations made prior to the event date will be refunded less a \$15 service fee. Substitutions may be made at any time without charge.

### Program Guarantee

We stand behind the high quality of our programs by providing the following unconditional guarantee: If you are not satisfied with this program, we'll give you a 100% refund of your registration fee.

### Further Questions

Call the Bureau of Education & Research (800) 735-3503 or visit us online at **[www.ber.org](http://www.ber.org)**. The Bureau is North America's leading presenter of PD training for professional educators. Programs are based on sound research, are highly practical in content and consistently receive excellent evaluations.



QPS3F1

© 2022 Bureau of Education & Research. All rights reserved

# PURPOSEFUL PLAY to Increase Students' Academic Learning and Social-Emotional Growth (Preschool - Kindergarten)



**BER**  
BUREAU OF EDUCATION & RESEARCH  
915 118th Avenue SE  
PO Box 96068  
Bellevue, WA 98009-9668  
[www.ber.org](http://www.ber.org)

Prsrt Std  
U.S. Postage  
**PAID**  
Bureau of  
Education &  
Research

## PURPOSEFUL PLAY: Increase Student Learning and Social-Emotional Growth

An outstanding one-day Live Online Seminar

Includes an extensive digital Resource Handbook

Can't Attend Live? Order the Recorded Version  
to access online at your convenience

QPS3F1



Bureau of Education & Research

## PURPOSEFUL PLAY to Increase Students' Academic Learning and Social-Emotional Growth (Preschool - Kindergarten)

Live Online Seminar  
or Recorded Version



A Unique One-Day Live Online Seminar  
(Also available as a Recorded Online Version  
to Use at Your Convenience)

Presented by

**Sheri Sutterley**

Outstanding Teacher, Author and National Presenter

The best, most-current classroom-proven strategies to increase students' learning and social-emotional growth with purposeful play

Dozens of practical, timesaving ideas for making best use of play-based learning to enhance your preschool or kindergarten instruction

Outstanding ways to foster a growth mindset and to develop students' foundational skills, creativity, perseverance, and confidence as learners