

Strengthening Your Co-Teaching Program: Practical CO-TEACHING STRATEGIES to Increase All Students' Achievement



A Unique Two-Day Live Online Institute Presented by

Toby Karten

Award-Winning Teacher, Presenter and Author of
Inclusion Strategies that Work! Research-Based Methods for the Classroom

Specifically Designed for Grades K-12 Special Education and ELL Staff, District and School Leaders and Teacher Teams including: General Education Teachers, Special Education Staff and Other Specialists who Co-Teach or are Preparing to Co-Teach as a Part of Their Inclusion Practices

Learn highly practical co-teaching approaches and how they can be integrated most effectively into your schools and classrooms to make the most of a co-teaching program

Discover how general educators and specialists can work together with greater success to maximize student learning in co-taught learning environments

Timesaving ways to develop collaborative support systems for communicating with co-teaching partners to develop a highly effective co-teaching model

Learn dynamic, differentiated techniques for adapting instruction and lessons to reach more students in a co-taught model

Can't Attend?

Order the recorded version and take the institute online at your convenience (see page 6)

LIVE ONLINE INSTITUTE

March 13-14

9 AM Central, 8 AM Mountain,
7 AM Pacific, 10 AM Eastern

March 22-23

9 AM Eastern, 8 AM Central,
7 AM Mountain, 6 AM Pacific

CEUs and Graduate Credit Available
See page 6 for details

“Great balance of resources, involvement/engagement and professional input. Toby is equally relatable and knowledgeable.”

— DANIELLE LONERGAN, ELA TEACHER

Two-Day Live Online Co-Teaching Leadership Institute

“ *I truly enjoyed Toby’s respectful, knowledgeable style. She is an inspiration!*”

– ERICA PALLATRONI,
ELEMENTARY SPECIAL ED.
TEACHER



Practical Ideas and Strategies

Today’s classrooms are more diverse than ever before and we, as educators, are challenged to meet the needs of all students including those with disabilities or language development needs. Co-teaching is a powerful way to meet the academic needs of a variety of learners in today’s classrooms. But what exactly is co-teaching and what are the most effective ways to go about it? In this outstanding two-day institute, **TOBY KARTEN** will offer you dozens of practical tips, tools and strategies to assist you in creating a new co-teaching program or strengthening your current co-teaching program.

You will learn how two teachers can work together most efficiently and effectively, numerous ways to differentiate lessons that work best with two teachers and how to best communicate with your co-teaching partner. Co-teaching has the potential to assist educators to create classrooms that recognize and address the range of student abilities by using the expertise of both general educators and specialists. Join Toby and discover the powerful benefits of co-teaching and gain a wealth of new ideas you can use immediately.

A Practical, Two-Day Institute Focused on Strengthening Your Co-Teaching Program

Plan to attend as a school team, department team, district team, or as a school/district leader to gain specific strategies to increase the effectiveness and streamline the planning for your co-teaching program. You will learn how to build on the success of your current program, identify the key components that have the greatest impact on student achievement and find specific areas you need to target for implementation and improvement. Leave equipped with a wealth of the most effective co-teaching strategies to help you accelerate achievement for all your students, including students with special needs and English Language Learners.

Develop a Plan to Increase the Effectiveness of Your Co-Teaching Program: Planning, Scheduling and Evaluating the Co-Teaching Process

Discover the attributes of highly effective co-teaching models and how you can start or strengthen co-teaching in your own department, grade level, school, or district, including building teacher instructional expertise and developing collaborative co-teaching teams. During the two days, you will learn numerous strategies to maximize achievement for your students. Ideas and tips for planning, scheduling and evaluating will be shared along with specific ideas to build relationships between co-teachers to create successful inclusive learning environments. You will also receive an extensive digital resource handbook to help you implement all you learn.

Who Should Attend

Grades K-12 Special Education and ELL Staff, District and School Leaders and Teacher Teams including: General Education Teachers, Special Education Staff and Other Specialists who Co-Teach or are Preparing to Co-Teach as a Part of Their Inclusion Practices

Specific Topics ... Here's What You'll Learn

- How to **maximize your students' learning through effective co-teaching practices** ... Implications for your own school or district program
- Powerful strategies for **using co-teaching to teach and reach students with disabilities** and maximize instructional effectiveness for all students
- **Tools to strengthen relationships between co-teaching staff** and maximize each person's expertise
- Ideas and tips for **planning, scheduling and evaluating the co-teaching process**
- **Grouping structures that maximize learning** for all students
- **Professional learning activities** that help maintain and grow your co-teaching program
- Real-life ways to **find time for planning and monitoring co-taught instruction** ... Ideas that will make the best use of the limited time you have
- Proven **approaches for overcoming resistance** and increasing buy-in
- Successful **structures for communicating effectively** in co-teaching partnerships
- Dynamic **differentiated techniques for adapting instruction and assessment** to reach more students
- **Tips for using technology** in co-teaching
- **Strategies to teach students to learn and work in groups** in a co-taught learning environment
- Practical **tools to clarify roles and responsibilities** so both teachers are fully utilized
- Innovative ways to **keep rigor and your standards a priority**
- **Efficient techniques and frameworks for co-planning your lessons** so all students are working toward meeting your standards
- **Dozens of instantly usable strategies, innovative tips and techniques** you can use and share to strengthen your co-teaching program



“ *I love Toby's enthusiasm! She shares lots of great ideas!*”

– DIANE NOVATNIK, SPECIAL ED. TEACHER



A Message From Your Institute Leader, Toby Karten



Uniquely Qualified Instructor

TOBY KARTEN is an award-winning special educator, dynamic presenter, and author who is passionate in sharing her knowledge with others. She has taught students ranging from preschool to graduate level across the least restrictive continuum. Toby works with school districts across the country and internationally as a staff developer, inclusion coach and educational consultant, author and adjunct professor. Toby focuses on creative, practical solutions for helping ALL students gain not only access, but also ongoing successes in inclusive classrooms. She is the author of *Strengthening Your Co-Teaching Program: Practical CO-TEACHING STRATEGIES to Increase All Students' Achievement*, the extensive digital resource handbook each participant will receive at the seminar. Additional authorships include *Inclusion Strategies That Work! Research-Based Methods for the Classroom*. Toby has also authored and edited numerous books and quick reference guides on the topics of co-teaching and inclusive classrooms.

Dear Colleague:

In my years of experience as a special educator, co-teacher, inclusion coach, and educational consultant, I can firmly state that when evidence-based practices are applied and monitored with fidelity and integrity, student gains follow! Now, imagine you multiply that effectiveness by two! That's what this unique co-teaching leadership institute is all about! We will explore can-do, and will-do co-teaching practices that proactively connect to staff and student realities. You'll gain new strategies and resources to achieve highly effective co-teaching partnerships! Co-teaching includes collaboratively planning how to divide tasks with instruction and assessment to support, challenge, and strengthen student learning. General and special educators collaboratively raise the learning for students with and without special needs as they also capitalize on one another's strengths. Together we will connect the "co-teaching dots" to make that happen in your schools and classrooms.

Together, we will explore the what, how and why for certain practices and how specific co-teaching models and protocols work better for certain pairs and students with and without specific differences. Yes, there are co-teaching obstacles and challenges, but there are also solutions that acknowledge each learner and each co-teacher as an individual who has strengths, interests, and challenges. This institute will equip you and your colleagues with the essential knowledge and skills that demonstrates how to effectively reach students as co-teaching professionals.

I look forward to meeting you at the institute and sharing many outstanding co-teaching strategies and resources that you'll be able to use immediately to strengthen your co-teaching program and the achievement of students with and without special needs.

Sincerely,

A handwritten signature in cursive script that reads "Toby Karten".

Toby Karten

P.S. I can't wait to share these practices with you, since teaching students with special needs is my passion. And, of course, together is always better!

“Join me so I can share tips, timesavers and tools that will enhance co-teaching in your school or district right away.”

What Your Colleagues Say About Toby Karten

*"I appreciate all of the **great resources** that Toby shares."*

– Karin Pencil, Spec. Ed. Teacher

*"Toby is **very informative!**"*

– Jamie Murrell, SLP

*"**Toby is fantastic!** Her engagement techniques will enhance instruction for students."*

– Kelly Crawford, Spec. Ed. Administrator

*"Toby presented **the best seminar I have taken.**"*

– Christie Warner, Teacher

*"Toby is **very knowledgeable and has a plethora of ideas** and strategies."*

– Robin Thompson, HS Teacher

*"I **love the list of resources** provided!"*

– Caroline Babula, Teacher

*"I enjoyed Toby's enthusiasm! It is **so evident that she truly wants to support teachers.**"*

– Jamie Urban, Spec. Ed. Teacher



About BER Live Online Seminars

Outstanding Instructors

All programs are led by outstanding BER national trainers.

Extensive Digital Resource Handbook

You'll have access to an extensive digital Resource Handbook before, during and after your seminar.

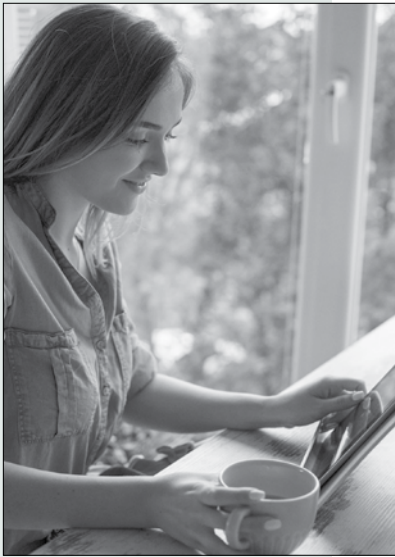
Highly Interactive

You'll be able to ask questions in real time and interact with the instructor and other participants.

Program Guarantee

As we have for 45 years, we guarantee the high quality of our programs. If you are not satisfied, we'll give you a 100% refund.

Special Benefits of Attending



“Toby is a very knowledgeable presenter.”

– Tammy Rummings, Spec. Ed.
Teacher

On-Site Training

Most BER seminars can be brought to your school or district in-person or online. See the options at www.ber.org/onsite or call 877-857-8964 to speak to one of our On-Site Training Consultants.

Extensive Digital Resource Handbook

Each participant will receive an extensive digital resource handbook designed specifically for this institute. The handbook includes:

- Descriptions of critical co-teaching components
- Samples of co-teaching lesson plans across content areas
- Worksheets and reproducibles for organizing the co-teaching relationship
- Teacher-friendly lists of instructional strategies that work especially well in co-taught learning environments
- Tips for communicating with your partner
- Tools for evaluating your co-teaching program
- A bibliography of resources on co-teaching

Share Ideas With Other Educators

This institute provides a great opportunity for school and district leaders and teams to share ideas with other educators who are also interested in practical ways to strengthen their co-teaching programs.

Consultation Available

Toby Karten will be available for consultation regarding your questions and the unique needs of your own co-teaching program.

Meet Inservice Requirements / Earn State CEUs

Participants of Live Online Institutes and those completing the Recorded Version online can receive a certificate of participation that may be used to verify ten continuing education hours. For details about state CEUs available, visit www.ber.org/ceus

Earn One to Four Graduate Semester Credits



Up to four graduate level professional development credits are available with an additional fee and completion of follow-up practicum activities. Details may be found at www.ber.org/credit

Can't Attend?

Other Professional Development Options:



Recorded Version of the Institute

Order the recorded version of this institute to take online at your convenience. You'll have access to the entire course and to the extensive digital resource handbook. To enroll, see registration form on page 7, and for optional CEUs and graduate credit, please visit www.ber.org/credit



Related On-Demand Online Courses

Related On Demand Video-Based Online Learning courses, *Co-Teaching in Inclusive Classrooms*: for Grades K-6 (*Small Group Strategies and Whole Group Strategies*) and for Grades 6-12 (*Strategies to Increase Learning and Strategies that Maximize Instructional Impact*), and other SLP-related courses, are available for immediate registration. To enroll, visit www.ber.org/online

Strengthening Your Co-Teaching Program: Practical CO-TEACHING STRATEGIES to Increase All Students' Achievement

Registration (AXY3S1)

- 1. **March 13-14, 2023** (Start time: 9 AM Central)
- 2. **March 22-23, 2023** (Start time: 9 AM Eastern)
— or —
- 3. **I'd like to order the recorded version of this institute**

FIRST NAME	M.I.	LAST NAME
POSITION, SUBJECT TAUGHT		
GRADE LEVEL		
SEMINAR NUMBER: _____ (Please see list above)		

List additional registrants on a copy of this form

SCHOOL NAME	
SCHOOL MAILING ADDRESS	
CITY & STATE	ZIP CODE
SCHOOL PHONE NUMBER	HOME PHONE NUMBER
()	()

Registration confirmations and login details are sent via e-mail

E-MAIL ADDRESS (REQUIRED FOR EACH REGISTRANT)	
HOME MAILING ADDRESS	
CITY & STATE	ZIP CODE

IMPORTANT – PRIORITY ID CODE: EAXY3S1

METHOD OF PAYMENT – Team Discount Available

The registration fee is \$595 per person,
for teams of three or more registering at the same time, the fee is \$545
per person. **Payment is due prior to the program.** No cash, please.

- A check (payable to **Bureau of Education & Research**) is attached
- A purchase order is attached, P.O. # _____
(Be sure to include priority ID code on the P.O.)
- Charge my: MasterCard VISA Discover
- Account # _____ Exp. Date: _____
MO/YR
- Billing Zip Code: _____ 3 Digit CVV Code: _____
(Found on back of card)

Please print name as it appears on card

FIVE EASY WAYS TO REGISTER:

- REGISTER ONLINE** at: www.ber.org
- EMAIL this form to:** register@ber.org
- PHONE toll-free:** **1-800-735-3503**
(Weekdays 5:30 am - 5:00 pm Pacific Time)
- FAX this form to:** **1-425-453-1134**
- MAIL this form to:** **Bureau of Education & Research**
915 118th Avenue SE • PO Box 96068
Bellevue, WA 98009-9668

Program Hours

All Live Online Institutes are scheduled 9:00 AM – 3:30 PM daily in the time zone indicated. Check in 15 minutes prior. Registrants will be sent login information by email four days before their Live Online Institute.

Fee

The registration fee is \$595 per person, \$545 per person for groups of three or more registering at the same time. Call us at 1-800-735-3503 for groups of ten or more. **Payment is due prior to the program.**

Fee includes institute registration, a certificate of participation and an extensive digital resource handbook. The fee is the same for Live Online Institutes or Recorded Institutes.

Cancellation/Substitutions

100% of your paid registration fee will be refunded if you can't attend and notify us at least 10 days before the seminar. Late cancellations made prior to the event date will be refunded less a \$15 service fee. Substitutions may be made at any time without charge.

Program Guarantee

We stand behind the high quality of our programs by providing the following unconditional guarantee: If you are not satisfied with this program, we'll give you a 100% refund of your registration fee.

Further Questions

Call the Bureau of Education & Research (800) 735-3503 or visit us online at www.ber.org. The Bureau is North America's leading presenter of PD training for professional educators. Programs are based on sound research, are highly practical in content and consistently receive excellent evaluations.



AXY3S1

© 2023 Bureau of Education & Research. All rights reserved

Strengthening Your Co-Teaching Program: Practical CO-TEACHING STRATEGIES to Increase All Students' Achievement



An outstanding two-day Live Online Institute

Includes an extensive digital Resource Handbook

Can't Attend Live? Order the Recorded Version to
access online at your convenience

BER
BUREAU OF EDUCATION & RESEARCH
915 118th Avenue SE
PO Box 96068
Bellevue, WA 98009-9668
www.ber.org

Prsrt Std
U.S. Postage
PAID
Bureau of
Education &
Research

TWO-DAY INTENSIVE LIVE ONLINE CO-TEACHING LEADERSHIP INSTITUTE

AXY351

BER
Bureau of Education & Research

Two-Day Intensive Co-Teaching Leadership Institute Strengthening Your Co-Teaching Program: Practical CO-TEACHING STRATEGIES to Increase All Students' Achievement

Live Online Seminar or
Recorded Version



A Unique Two-Day Live Online Institute
(Or Order the Recorded Version to Access Online at Your Convenience)

Presented by

Toby Karten

Award-Winning Teacher, Presenter and Author of
*Inclusion Strategies that Work! Research-Based Methods for
the Classroom*

Learn highly practical co-teaching approaches and how they can be
integrated most effectively into your schools and classrooms to make the
most of a co-teaching program

Discover how general educators and specialists can work together
with greater success to maximize student learning in co-taught learning
environments

Timesaving ways to develop collaborative support systems for
communicating with co-teaching partners to develop a highly
effective co-teaching model

Learn dynamic, differentiated techniques for adapting instruction
and lessons to reach more students in a co-taught model