

TWO-DAY INTENSIVE GUIDED MATH LEADERSHIP INSTITUTE

STRENGTHENING YOUR GUIDED MATH PROGRAM: Practical GUIDED MATH Strategies to Increase All Your Students' Math Achievement (Grades K-6)



LIVE ONLINE INSTITUTE

Presented by **KELLY HARMON**

Outstanding Math Teacher, Author and National Presenter

Specifically Designed for K-6 District and School Leaders and Leadership Teams, Math Teachers, Math Leaders, Math Coaches, Principals, and Classroom Teachers on Leadership Teams

- **Learn the key components of highly successful Guided Math models** and how you can incorporate them into your current Guided Math program
- Organize your Guided Math program based on **best practices of effective instruction and assessment** to guide decisions for forming small, Guided Math groups
- **Develop teacher expertise in Guided Math** instruction to raise math achievement in your school or district
- **Acquire dozens of instantly usable strategies, innovative tips and techniques** you can use and share with your school and district teams

February 15-16

9 AM Eastern, 8 AM Central,
7 AM Mountain, 6 AM Pacific

CAN'T ATTEND?

Order the recorded version and take the course online at your convenience (see page 6)

CEUs and Graduate Credit Available
See page 6 for details

*“Excellent presentation.
Kelly shows great passion and
enthusiasm. I’m looking forward
to applying these strategies.”*

— HELEN JODY, TEACHER

Practical Ideas and Strategies

Learn how to better lead your school, grade level or district math team in this strategy-packed two-day institute led by popular national presenter, Kelly Harmon. You will discover how to work with teachers to identify and implement the most effective cutting-edge, Guided Math instructional strategies to greatly increase student math achievement in grades K-6. Kelly will share strategies for organizing the math block from beginning to end, as well as ideas for planning and implementing more intentional small Guided Math groups that meet the needs of all your students – from those who excel in math to those who struggle with concepts and basic skills. You will leave equipped to assist your teachers in using the top, research-based instructional strategies that will help your students learn and retain key math skills and concepts, as well as how to transfer these skills to math problem solving, all in a Guided Math format.

This is a unique opportunity to evaluate your own Guided Math program in light of current research that identifies the most effective math instructional practices and gain an in-depth look at how these practices can be applied to your classrooms, school or district. You will walk away with dozens of practical strategies and an extensive digital resource handbook to help you lead and teach your teachers. **Bring your math team to join Kelly for two, fast-paced days packed with the best strategies to increase the math achievement for all your students.**

A Practical, Two-Day Institute Focused on Increasing Math Achievement Using the Guided Math Model



Plan to attend as a school or district team, a representative team member or district leader to increase the effectiveness of your Guided Math program. You will learn how to build on the success of your current program, identify the key components that have the greatest impact on math achievement and find the specific

areas you need to target for implementation and improvement. Leave equipped with a wealth of the most current, cutting-edge math instructional strategies that will help to increase all your students' achievement in math.

Develop a Plan to Structure Your Guided Math Program for the Greatest Student Results and to Boost Teacher Expertise in Guided Math

Discover the attributes of highly successful Guided Math programs and how you can implement them in your own program, including building teacher instructional expertise. Gain dozens of practical, instructional strategies you will be able to take back to train your teachers. During the two days, you will learn how to collect and interpret specific data about your current math program and how to make specific adjustments that will lead to improved student achievement.



Outstanding Strategies You Can Use Immediately

- **Practical strategies for making Guided Math a powerful teaching framework** for all ability levels, from struggling to highly capable
- **Specific strategies for organizing the math block** for effective Guided Math instruction
- **Realistic ways to modify and differentiate your math centers** to maximize learning for each of your students
- Set math goals and targets and **track student progress**
- **Take a close look at Guided Math groups** – how long, what students should be doing and what the teacher is doing during small group time
- How you can use Guided Math to **catch students before they fall behind**
- **Quick assessments** for computational fluency and problem solving
- **Use math notebooks to help students** write and draw to demonstrate math concepts and vocabulary
- How to better **use manipulatives to develop conceptual knowledge** – what to do and how long to use them before moving to representational and abstract stages
- **Set up a highly effective math learning environment** including math vocabulary walls and stations for independent practice
- **Develop mathematical mindsets** through focused feedback, student goal setting and self-evaluation
- Create anchor charts and tools to **provide multi-modality learning**
- Easy and exciting **ways to engage** parents in math
- **Use children's literature to engage** students in problem solving
- **How to set up math games** that involve students in strategic thinking and deepen their foundational knowledge
- Use daily number talks to **help students practice computational skills and develop mental math strategies**
- **Effectively assess and evaluate your math learning centers** to make intentional instructional decisions
- **Increase students' math skills and understanding** of number sense, basic facts, computation, measurement, geometry, and problem solving
- **Gain assessment strategies** that will guide the forming of flexible and intentional small Guided Math group

“*Kelly tailored to exactly what we all wanted to learn and shared many great examples and resources that can be used tomorrow!*”

– CHRISTINA HEWM, TEACHER



**To Register,
Call Toll-Free**

1-800-735-3503

A Message From Institute Leader, Kelly Harmon



“*The most important ingredient in a Guided Math program is a teacher who has the expertise to determine what students already know and how to build on that knowledge...*”



Bureau of Education & Research

915 118th Avenue SE • PO Box 96068 • Bellevue, WA 98009-9668
Phone (800) 735-3503 • Fax (425) 453-1134 • www.ber.org

Dear Colleague:

Given the range of students' mathematical skills, we must know how to balance a variety of instructional models including whole group, direct instructional strategies, as well as small group lessons and interventions to meet individual student needs. When used correctly, Guided Math allows teachers to provide the necessary differentiated instruction that leads to success for all students. The most important ingredient in a Guided Math program is a teacher who has the expertise to determine what students already know and how to build on that knowledge, as well as effective, efficient organization and set-up of a Guided Math program. Join your colleagues for two days dedicated to building teacher expertise and planning for a successful Guided Math program in your school or district.

During our two days together, some of the topics we'll explore are:

- A wealth of highly effective, timesaving strategies to make Guided Math a more successful model in your school or district
- Outstanding ideas, ready-to-use math lessons and a variety of resources for assessing and teaching math skills and concepts in a Guided Math format
- What the rest of your students are doing while you work with small groups
- How Guided Math makes differentiation possible to better meet the needs of all your students
- Innovative, hands-on Guided Math strategies perfect for grades K-6 students

I am truly excited to offer dozens of ideas, resources, tips, and suggestions you can take back to your teachers to begin implementing immediately to enhance your Guided Math program. Please join me for two days that promise to be dynamic, fast-paced and packed with ideas to increase all your students' achievement in mathematics.

Sincerely,

Kelly Harmon

P.S. You will receive an extensive digital resource handbook and access to Kelly's online digital resources created specifically for this two-day institute. It is filled with all the strategies and ideas for you to take back to your school and district.

What Your Colleagues Say About Kelly Harmon

"Fantastic institute! I cannot wait to use Kelly's strategies to help my students build conceptual understanding."

– Amy Borders, 1st Grade Teacher

"What a great time spent in learning and discussion! I now have a bundle of resources to use with my students as well as encourage my colleagues to use Guided Math."

– Renee Sanders, 2nd Grade Teacher

"Wonderful! Kelly is energetic and full of knowledge. Thank you for sharing your ideas and resources. I can't wait to explore and implement it all in my classroom!"

– Kim Martinez, Kindergarten Teacher

"Kelly's institute was well-presented and organized. Tons of valuable resources were shared – thank you!"

– Pamela Watson, 2nd Grade Teacher

"I learned so much! Thank you Kelly for your enthusiasm to help us grow as teachers."

– Rachel Marie Hester, 3rd Grade Teacher

"Phenomenal day filled with useful information! I can't wait to share with my staff."

– Tammy Briggs, Math Coach

Uniquely Qualified Instructor

KELLY HARMON is an enthusiastic and engaging presenter who has a wealth of real and practical elementary classroom and school experience. She has worked with dozens of schools and diverse populations to help increase individual, class and schoolwide math achievement. Her work with teachers and school teams in organizing program structures, developing teacher expertise in math instruction and fine-tuning assessment practices for targeted instruction has given her national recognition as an expert in the field. Kelly is the author of *STRENGTHENING YOUR GUIDED MATH PROGRAM: Practical GUIDED MATH Strategies to Increase All Your Students' Math Achievement (Grades K-6)*, the comprehensive digital resource handbook you will receive at the two-day institute. Kelly is known not only for her knowledge and skills in working with teachers, but also for her fast-paced, interactive and highly engaging institutes.

About BER Institutes

Outstanding Instructors

All programs are led by outstanding, top-rated BER national trainers.

Extensive Digital Resource Handbook

You'll receive an extensive digital Resource Handbook full of practical strategies and resources.

Highly Interactive

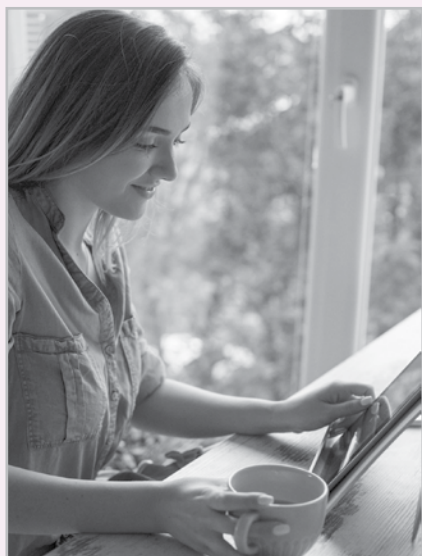
You'll be able to ask questions, consult with the instructor, and share ideas with other participants.

Program Guarantee

As we have for 45 years, we guarantee the high quality of our programs. If you are not satisfied, we'll give you a 100% refund.



Special Benefits of Attending



“Thanks for all of the information and great, practical classroom and technology tips. Kelly is very enthusiastic about math and helping students understand it.”

— RANA, TEACHER

On-Site Training

Most BER seminars can be brought to your school or district in-person or online. See the options at www.ber.org/onsite or call 877-857-8964 to speak to one of our On-Site Training Consultants.

Extensive Digital Resource Handbook

Each participant will receive an extensive digital resource handbook giving you access to countless strategies. The handbook includes:

- Dozens of practical Guided Math Strategies and how to use them in your classroom
- Examples of math centers you can adapt to meet your needs
- Steps for student goal setting and action planning that include the math centers or stations they need to visit
- How to collect minute-by-minute data to determine which move to take next
- How to plan for scaffolding to mastery
- Elements of effective guided and independent practice
- Planning tools for creating lessons and formative assessments

Consultation Available

Kelly Harmon will be available to answer your specific questions and the unique needs of your own program.

Meet Inservice Requirements / Earn State CEUs

Participants of both the Live Online Institute and those completing the Recorded Version online can receive a certificate of participation that may be used to verify ten continuing education hours. In addition, state CEUs are available for both versions of the course. For details, visit www.ber.org/ceus

Earn One to Four Graduate Semester Credits



University of
Massachusetts
Global
A nonprofit
affiliate

Up to four graduate level professional development credits are available with an additional fee and completion of follow up practicum activities. Details may be found at www.ber.org/credit

Can't Attend?

Other Professional Development Options:



Recorded Version of the Institute

Order the recorded version of this institute to take online at your convenience. You'll have access to the entire course and to the extensive digital resource handbook. To enroll, see registration form on page 7, and for optional CEUs and graduate credit, please visit www.ber.org/credit



Related On-Demand Online Courses

Related On Demand Video-Based Online Learning courses, *Using Guided Math to Strengthen Students' Math Learning*, for Grades K-2 and Grades 3-6 and other math-related courses, are available for immediate registration. To enroll, visit www.ber.org/online

TWO-DAY INTENSIVE GUIDED MATH LEADERSHIP INSTITUTE

STRENGTHENING YOUR GUIDED MATH PROGRAM: Practical GUIDED MATH Strategies to Increase All Your Students' Math Achievement (Grades K 6)

Registration (AMX3W1)

- ☐ 1. February 15-16, 2023 (Start time: 9 AM Eastern)
— or —
☐ 2. I'd like to order the recorded version of this institute

FIRST NAME	M.I.	LAST NAME
<hr/>		
POSITION, SUBJECT TAUGHT	GRADE LEVEL	
<hr/>		
SEMINAR NUMBER: <hr/> (Please see list above)		
List additional registrants on a copy of this form		
SCHOOL NAME		
<hr/>		
SCHOOL MAILING ADDRESS		
<hr/>		
CITY & STATE	ZIP CODE	
<hr/>		
SCHOOL PHONE NUMBER	HOME PHONE NUMBER	
()	()	

Registration confirmations and login details are sent via e-mail

E-MAIL ADDRESS (<u>REQUIRED</u> FOR EACH REGISTRANT)	
<hr/>	
HOME MAILING ADDRESS	
<hr/>	
CITY & STATE	ZIP CODE
<hr/>	<hr/>

IMPORTANT: PRIORITY ID CODE EAMX3W1

METHOD OF PAYMENT – Team Discount Available

The registration fee is \$595 per person, for teams of three or more registering at the same time, the fee is \$545 per person. **Payment is due prior to the program.** No cash please.

☐ A check (payable to **Bureau of Education & Research**) is attached

☐ A purchase order is attached, P.O. #

 (Be sure to include priority ID code on the P.O.)

☐ Charge my: ☐ MasterCard ☐ VISA ☐ Discover

Account #

 Exp. Date:

 MO/YR

Billing Zip Code:

 3 Digit CVV Code:

 (Found on back of card)

 /

Please print name as it appears on card Signature (required for credit card purchases)

FIVE EASY WAYS TO REGISTER:



REGISTER ONLINE at: www.ber.org



EMAIL this form to: register@ber.org



PHONE toll-free: **1-800-735-3503**
(Weekdays 5:30 am - 5:00 pm Pacific Time)



FAX this form to: **1-425-453-1134**



MAIL this form to: **Bureau of Education & Research**
915 118th Avenue SE • PO Box 96068
Bellevue, WA 98009-9668

PRE-REGISTRATION REQUIRED DUE TO LIMITED ENROLLMENT

Program Hours

- All Live Online seminars start times are described on the cover
- Check-in 15 minutes prior to the institute
- Institutes are five hours in length plus breaks per day
- Registrants will receive login information by email four days before their institute

Fee

The registration fee is \$595 per person, \$545 per person for groups of three or more registering at the same time. Call us at 1-800-735-3503 for groups of ten or more. **Payment is due prior to the program.** Fee includes institute registration, a certificate of participation and an extensive digital resource handbook. The fee is the same for Live Online Institutes or Recorded Institutes.

Cancellations/Substitutions

100% of your paid registration fee will be refunded if you can't attend and notify us at least 10 days before the institute. Late cancellations made prior to the event date will be refunded less a \$15 service fee. Substitutions may be made at any time without charge.

Further Questions

Call the Bureau of Education & Research (800) 735-3503 or visit us online at **www.ber.org**. The Bureau is North America's leading presenter of PD training for professional educators. Programs are based on sound research, are highly practical in content and consistently receive excellent evaluations.

Program Guarantee

We stand behind the high quality of our programs by providing the following unconditional guarantee: If you are not satisfied with this program, we'll give you a 100% refund of your registration fee.



915 118th Avenue SE • PO Box 96068
Bellevue, WA • 98009-9668 • www.ber.org

Prsrt Std
U.S. Postage
PAID
Bureau of
Education &
Research

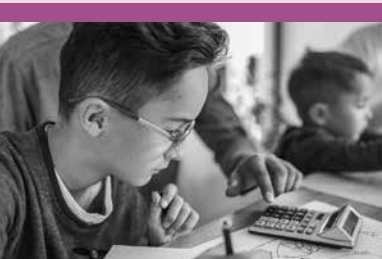
TWO-DAY GUIDED MATH LEADERSHIP INSTITUTE

**Increase Your Students' Math Achievement
(Grades K-6)**

- **An outstanding two-day Live Online Institute**
- **Includes an extensive digital Resource Handbook**
- **Can't Attend? Order the Recorded Version to access online at your convenience**

AMX3W1

TWO DAY INTENSIVE GUIDED MATH LEADERSHIP INSTITUTE STRENGTHENING YOUR GUIDED MATH PROGRAM: Practical Guided Math Strategies to Increase All Your Students' Math Achievement (Grades K-6)



A Unique Two-Day Live Online Institute

(Or Order the Recorded Online Version to Access at Your Convenience)

Learn the key components of highly successful Guided Math models and how to incorporate them into your current Guided Math program

Organize your Guided Math program based on **best practices of effective instruction and assessment**

Develop teacher expertise in Guided Math instruction to raise math achievement in your school or district

Acquire **dozens of instantly usable strategies, innovative tips and techniques**



BUREAU OF EDUCATION & RESEARCH